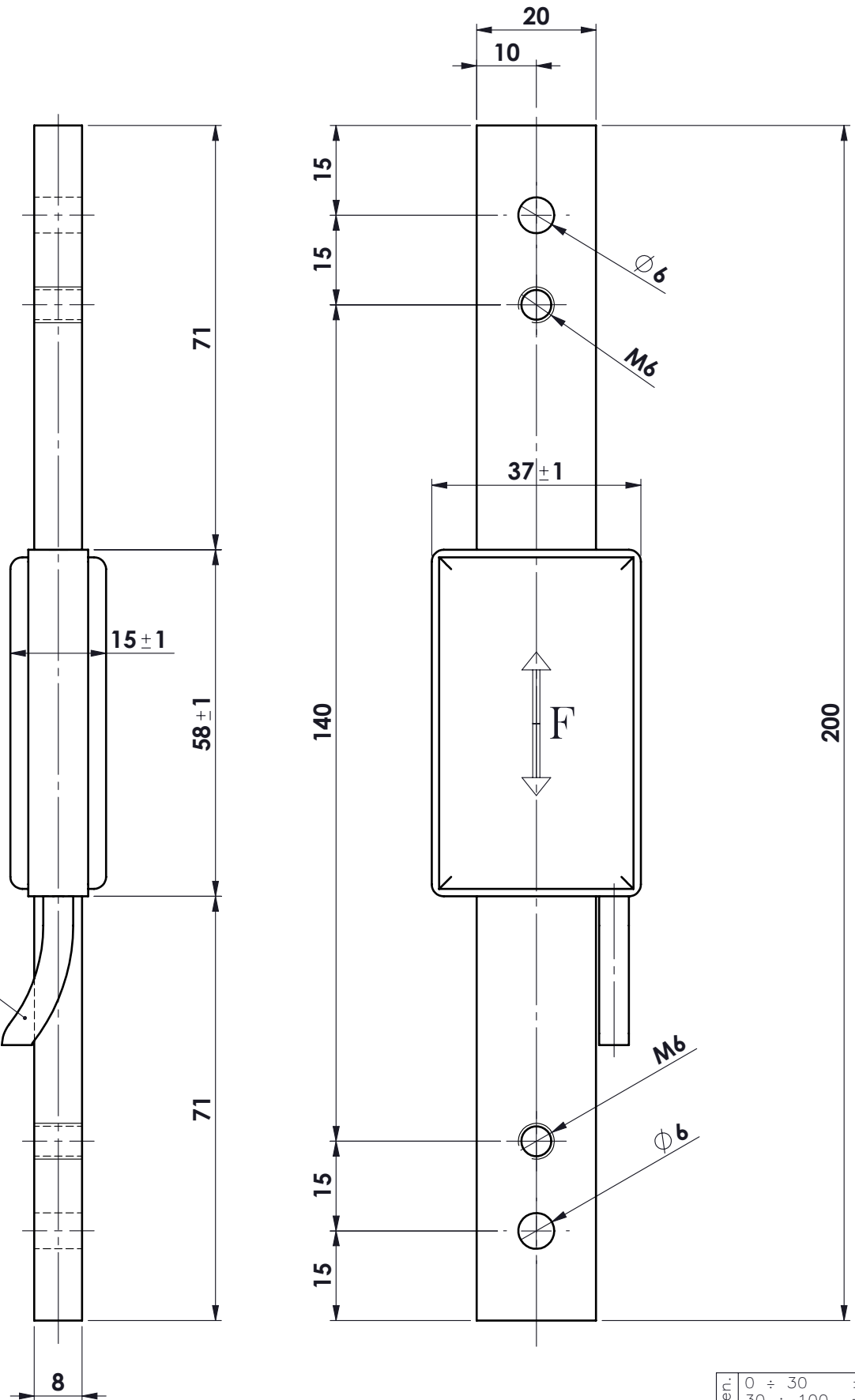
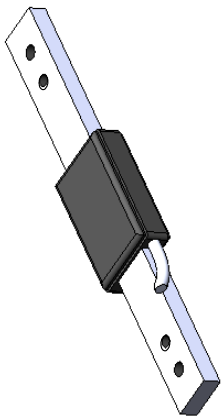
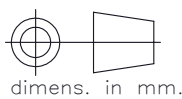


cavo m.2  
mod. SLS-0140



**MATERIALE ALLUMINIO  
PORTATA 50 kg.**

toler. gen.	0 ÷ 30	±0.10
	30 ÷ 100	±0.15
	100 ÷ 300	±0.25
	300 ÷ 500	±0.50
	foro/alb	H9 - h9
	sm. e raggi	0.5



dimens. in mm.

peso kg. 0.05  
Data 02.08.1990  
Scala 1:1

SENSORE DI SFORZO  
mod. BRS 50  
ASSIEME SENSORE

N° DISEGNO B.80

foglio 1  
di 1

disegnato FB

controllato

MATERIALE

GREZZO

TRATTAMENTO

FINITURA LAVORAZ.



**METIOR** s.r.l.