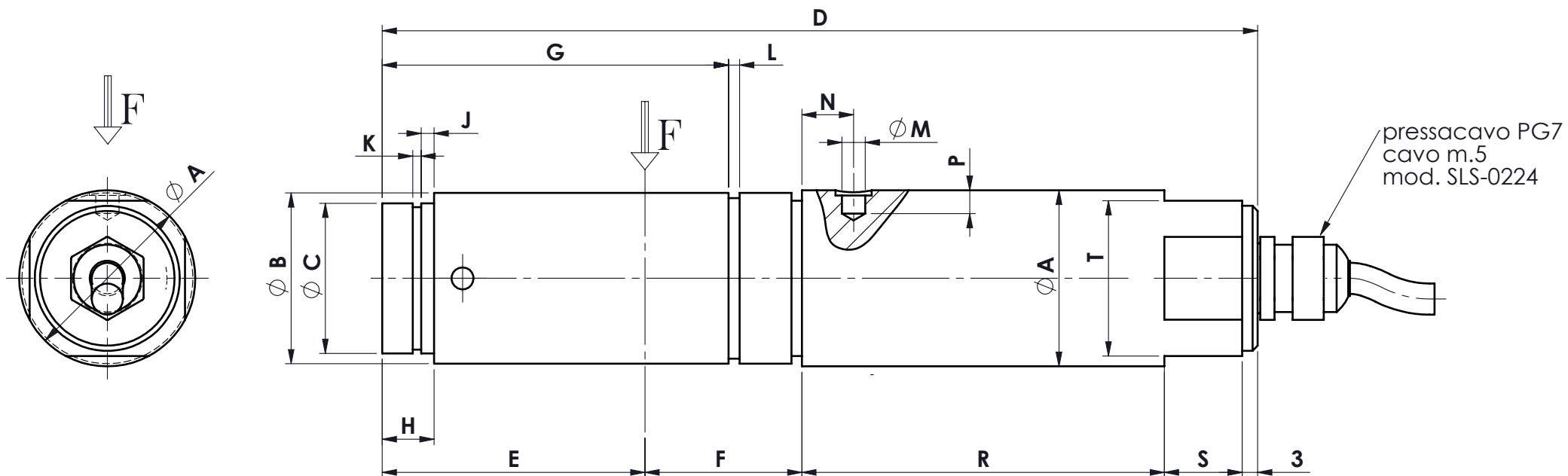
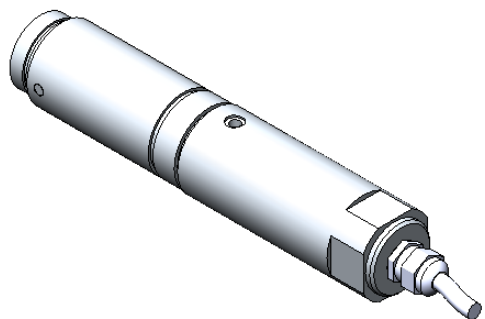


MOD. - PORTATA	ØA	ØB	ØC	D	E	F	G	H	J	K (DIN471)	L (DIN471)	ØM	N	P	R	S	T
CTP 1 / 2 / 500 kg.	34 ⁰ _{-0.1}	33 ^{-0.025} _{-0.064}	29 ⁰ _{-0.21}	169	46	35	/	10	2.5	1.6	/	4.4	10	2.3	70	15	30
CTM 1-2-3 ton.	51 ⁰ _{-0.12}	50 ^{-0.025} _{-0.064}	45 ⁰ _{-0.25}	213	60	55	97.85	13	4	1.85	2.15	7.5	12	5	75	20	46
CTM 5 ton.	77 ^{-0.10} _{-0.22}	75 ^{-0.030} _{-0.076}	70 ⁰ _{-0.30}	291	93	65	141.3	12	5	2.65	2.65	9.1	14	7	110	20	60
CTX 10 ton.	92 ^{-0.12} _{-0.26}	90 ^{-0.036} _{-0.090}	82 ⁰ _{-0.35}	315	107	65	155.4	15	6	2.65	3.15	12.6	17	8	120	20	70
CTX 20-30 ton.	101 ^{-0.12} _{-0.26}	100 ^{-0.036} _{-0.090}	90 ⁰ _{-0.35}	346	128	65	175.8	15	6	3.15	3.15	15.7	19	8.5	130	20	80
CTX 50 ton.	142 ^{-0.145} _{-0.305}	140 ^{-0.043} _{-0.106}	130 ⁰ _{-0.40}	450	165	75	212.8	35	20	4.15	4.15	15.7	30	8.5	180	27	80



MATERIALE ACCIAIO INOX
SENSIBILITA' 2 mV/V



.			toler. gen.	0 ÷ 30 ±0.10
.			toler. gen.	30 ÷ 100 ±0.15
B		21.04.2005	FB	TABELLA PORTATE mod. CPT			toler. gen.	100 ÷ 300 ±0.25
A		07.11.2001	FB	TABELLA DIMENSIONI "R"			toler. gen.	300 ÷ 500 ±0.50
Ap.		Data	Dis.	descrizione modifica			toler. gen.	foro/alb H9 - h9
						peso kg. =				CELLI DI CARICO CIL. A TAGLIO		N° DISEGNO		C.91/B						toler. gen.	sm. e raggi 0.5
						Data 21.02.1991				modelli CTP - CTM - CTX										toler. gen.	foglio 1
						Scala =				INGOMBRO CELLE										toler. gen.	di 1
						MATERIALE		GREZZO													
						TRATTAMENTO		FINITURA LAVORAZ.													
						PROPRIETA' METIOR srl		VIETATA LA RIPRODUZIONE ANCHE PARZIALE SENZA		PREVIA AUTORIZZAZIONE											



METIOR s.r.l.