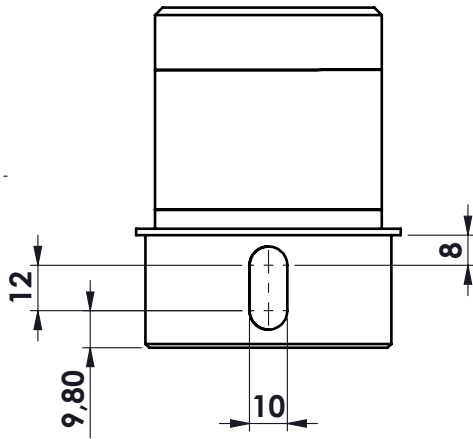
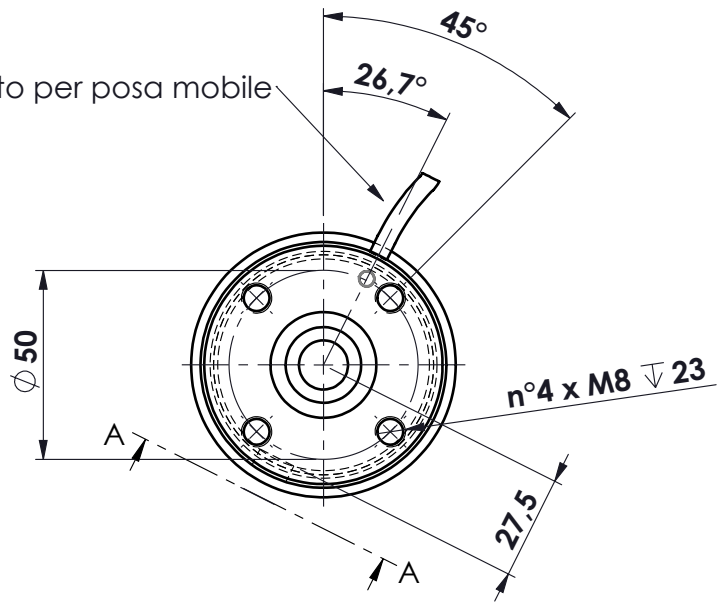
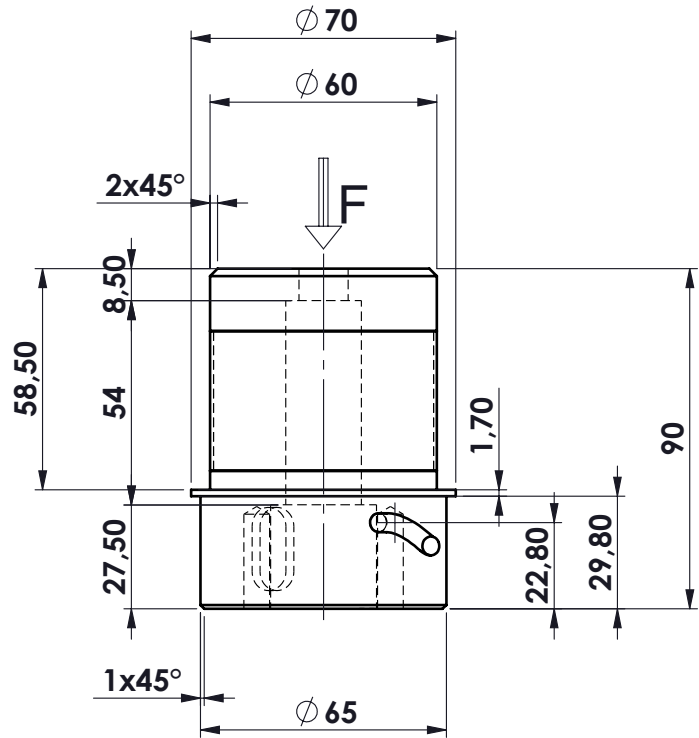
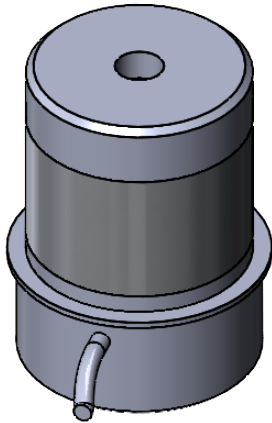


Cavo schermato per posa mobile



SEZIONE A-A



MATERIALE ACCIAIO INOX
 PORTATA 50.000 kg
 SENSIBILITA' 1,50 mV/V
 GRADO DI PROTEZIONE IP65

			toler. gen.		0 ÷ 30 ±0.10
					30 ÷ 100 ±0.15
					100 ÷ 300 ±0.25
					300 ÷ 500 ±0.50
					foro/alb H9 - h9
					sm. e raggi 0.5
A	19.01.2021	GT	ELIMINATO PRESSACAVO		
Ap.	Data	Dis.	descrizione modifica		
dimens. in mm.		peso kg. 0.27	CELLA DI CARICO IN COMPRESSIONE		N° DISEGNO A.2025/A
Scala 1:2		Data 31/07/2020	mod. CMQ 50007		disegnato GT
		ASSIEME CELLA		controllato	
MATERIALE			GREZZO		
TRATTAMENTO			FINITURA LAVORAZ.		