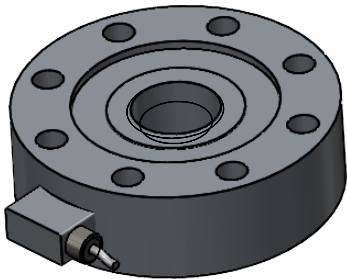
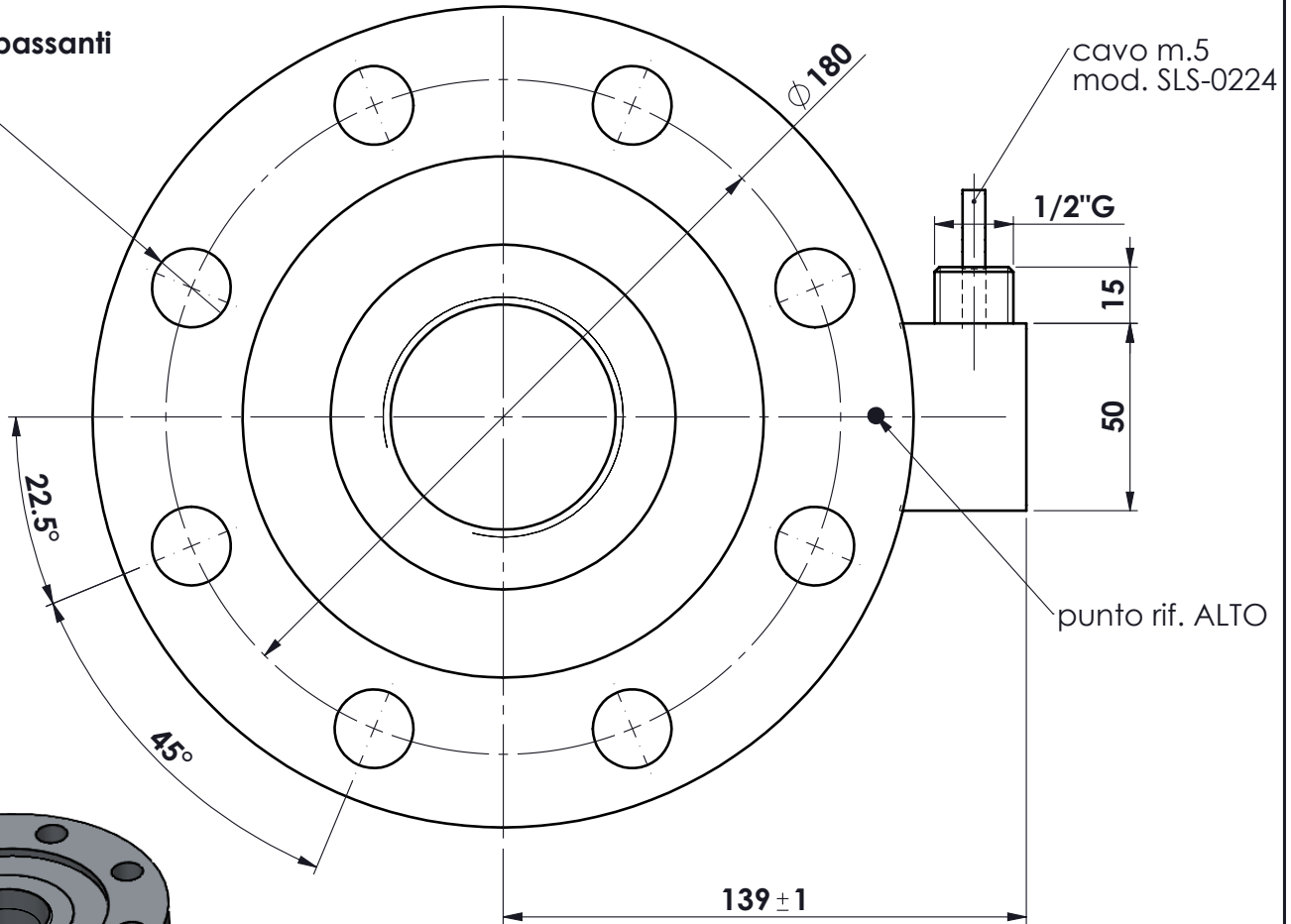
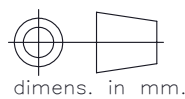


n.8 fori passanti
 $\phi 21$



MATERIALE ACCIAIO INOX
PORTATE 30.000 kg.
SENSIBILITA' 2 mV/V
protezione IP65

toler. gen.	0 ÷ 30	±0.10
	30 ÷ 100	±0.15
	100 ÷ 300	±0.25
	300 ÷ 500	±0.50
	foro/alb	H9 - h9
	sm. e raggi	0.5



peso kg. =
 Data 04.11.1996
 Scala 1:1

ASSIEME CELLA IN TRAZ/COMPRESS
 mod. CHC 30.000
 ASSIEME CELLA

N° DISEGNO

foglio 1
 di 1

disegnato FB

controllato

MATERIALE

GREZZO

TRATTAMENTO

FINITURA LAVORAZ.



METIOR s.r.l.