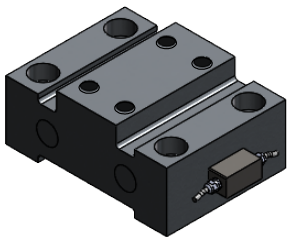
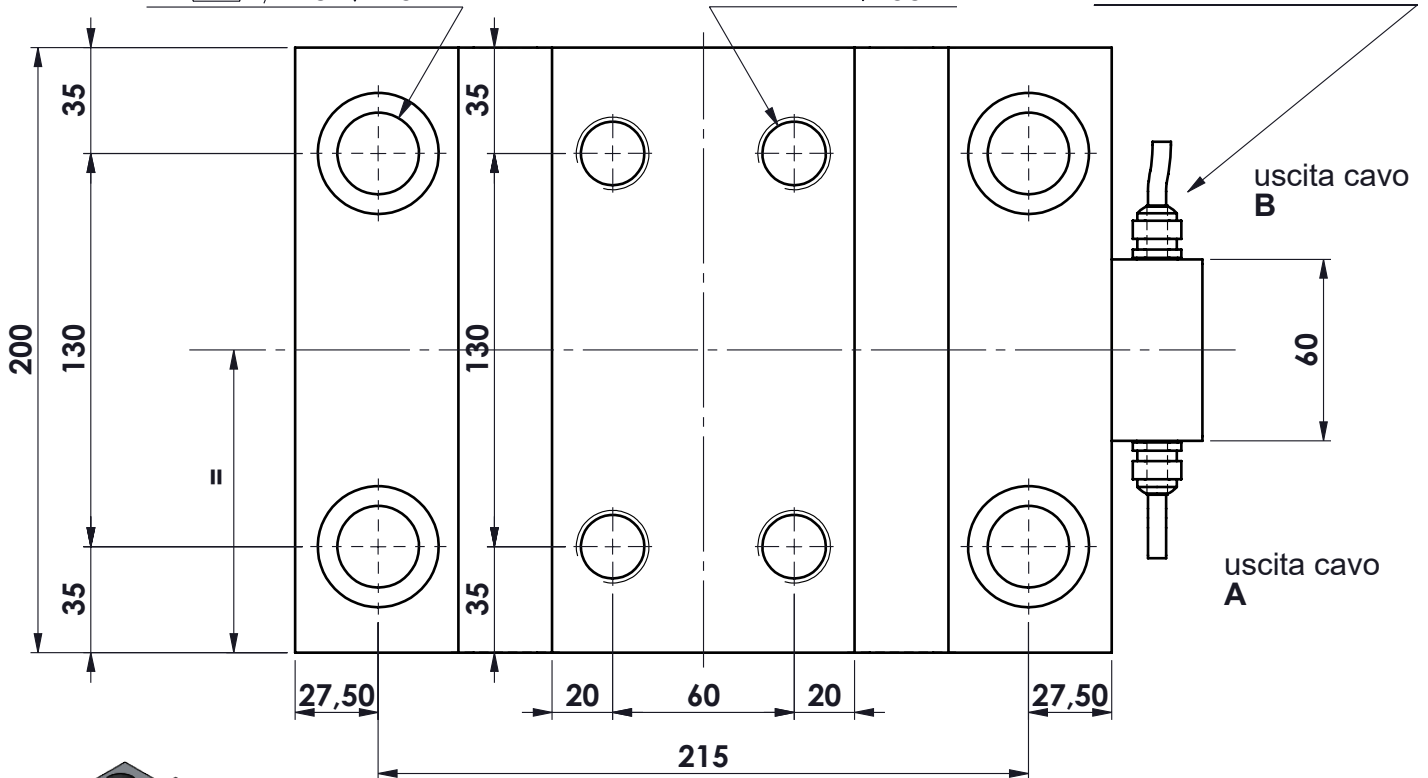


4 x  $\phi$  27 PASSANTE  
 $\square$   $\phi$  40  $\nabla$  25

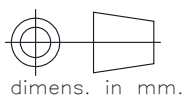
4 x  $\phi$  21  $\nabla$  55  
 M24  $\nabla$  50

Pressacavo mod. PG7  
 cavo m. 10  
 mod. SLS-0224



MATERIALE ACCIAIO INOX  
 PORTATA 30.000 kg.  
 SENSIBILITA' PREVISTA 1 mV/V

toler. gen.	0 ÷ 30	±0.10
	30 ÷ 100	±0.15
	100 ÷ 300	±0.25
	300 ÷ 500	±0.50
	foro/alb	H9 - h9
	sm. e raggi	0.5



peso kg. 39.39  
 Data 05.04.2023  
 Scala 1:2.5

CELLA DOPPIO TAGLIO (COMPR.)  
 mod. PRR 30002  
 ASSIEME

N° DISEGNO C.2297  
 disegnato GT

foglio 1  
 di 1

controllato

MATERIALE

GREZZO

TRATTAMENTO

FINITURA LAVORAZ.



**METIOR** s.r.l.