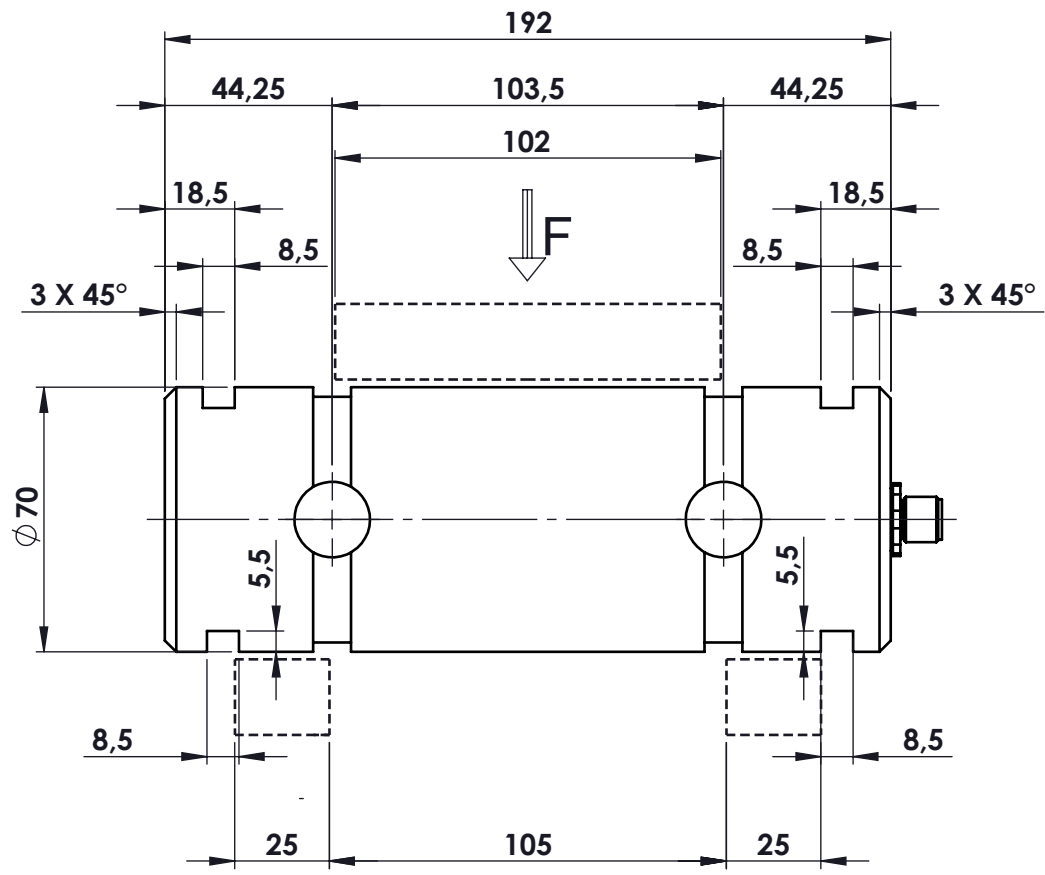
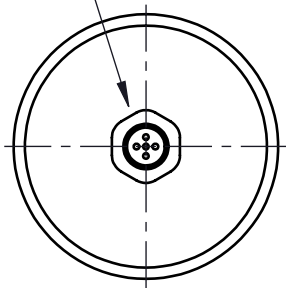
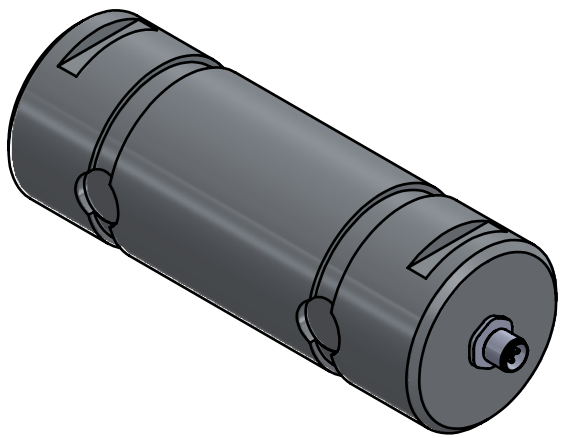


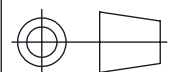

connettore mod.M12
mt.5 di cavo
mod. SLS-0224



MATERIALE ACCIAIO INOX
PORTATA 295000 N
SENSIBILITA' 4 ÷ 20 mA
protezione IP67
temperatura d'esercizio -30° ÷ +50°

toller. gen.	0 ÷ 30	±0.10
	30 ÷ 100	±0.15
	100 ÷ 300	±0.25
	300 ÷ 500	±0.50
	foro/alb H9 - h9 sm. e raggi	0.5



 dimens. in mm.	peso kg. 5.77 Data 16/05/2019	CELLA DI CARICO A PERNO mod. PRH 295000 N ASSIEME CELLA	N° DISEGNO C.1908 disegnato GT	foglio 1 di 1
	Scala 1:2		controllato	
MATERIALE TRATTAMENTO		GREZZO FINITURA LAVORAZ.		
PROPRIETA' METIOR srl VIETATA LA RIPRODUZIONE ANCHE PARZIALE SENZA PREVIA AUTORIZZAZIONE				