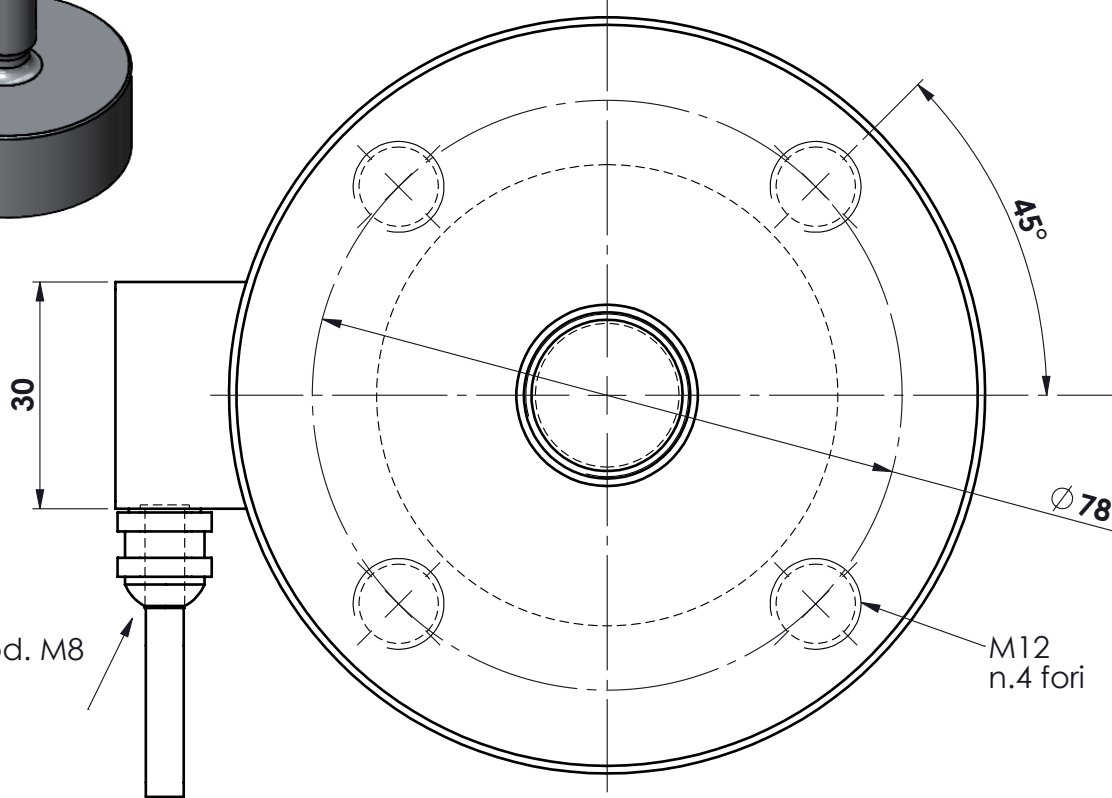
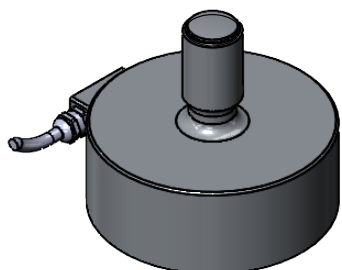



MATERIALE ACCIAIO INOX
 PORTATA kg. 5.000
 SENSIBILITA' 2 mV/V
 protezione IP67
 Marchiatura LMUZ 5001

ZONA ATEX:
 II 2G, Ex ib IIC T6/T5/T4 Gb
 II 2D, Ex ib IIIC T85/T100/T135°C Db
STRINGA Ex:
 TR 17/04-I-S-005-25



pressacavo mod. M8
 cavo m. 0,5
 mod. SLS-0140

			toler. gen.		0 ÷ 30 ±0.10
					30 ÷ 100 ±0.15
					100 ÷ 300 ±0.25
					300 ÷ 500 ±0.50
					foro/alb H9 - h9
					sm. e raggi 0.5
Ap.	Data	Dis.	descrizione modifica		
			peso kg. 2.53 Data 19.11.2020 Scala 1:1		CELL IN TRAZIONE-COMPR. mod. MUZ 5.001 ASSIEME CELLA
MATERIALE			GREZZO		
TRATTAMENTO			FINITURA LAVORAZ.		
					N° DISEGNO B.2056.EX foglio 1 di 1 disegnato GT controllato
					 METIOR s.r.l.